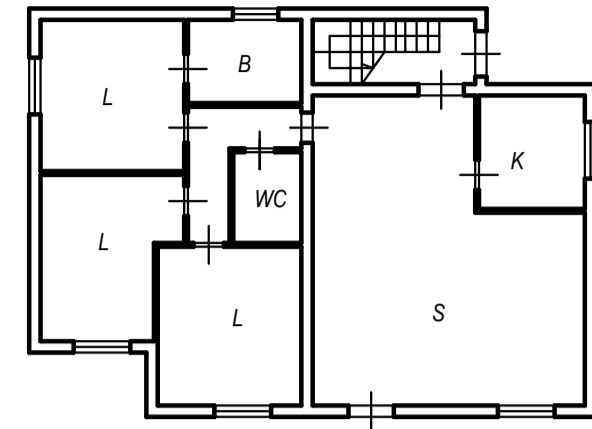
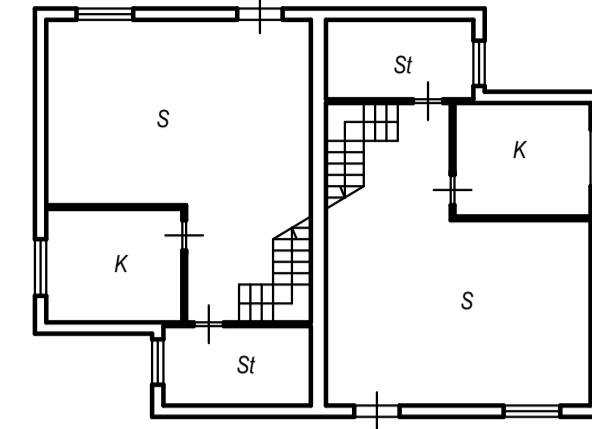


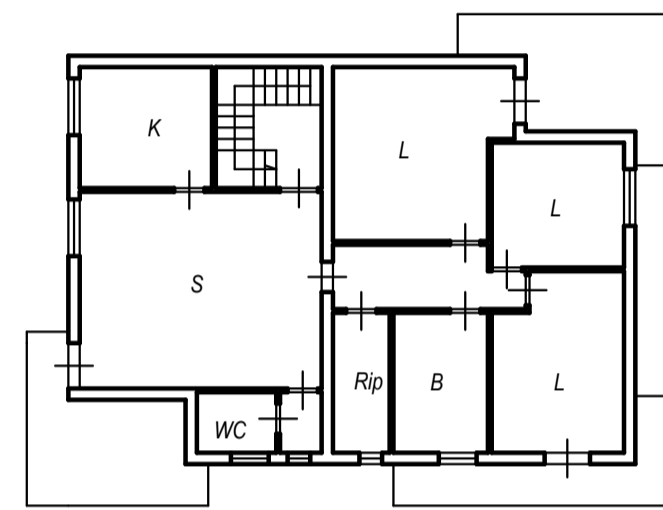
PIANTA PIANO TERRA



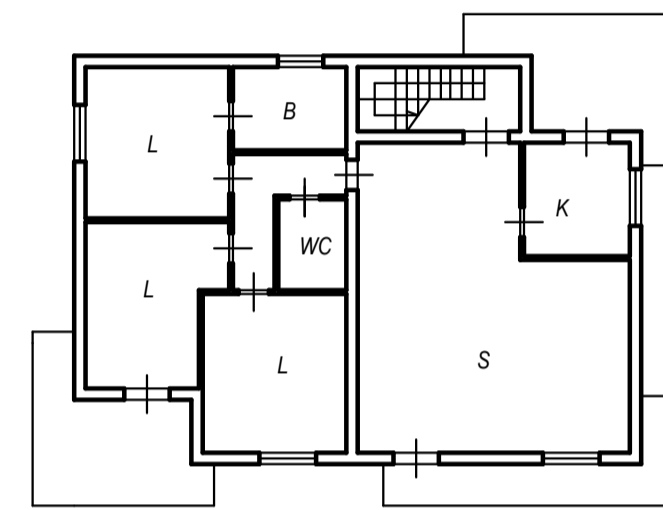
PIANTA PIANO TERRA



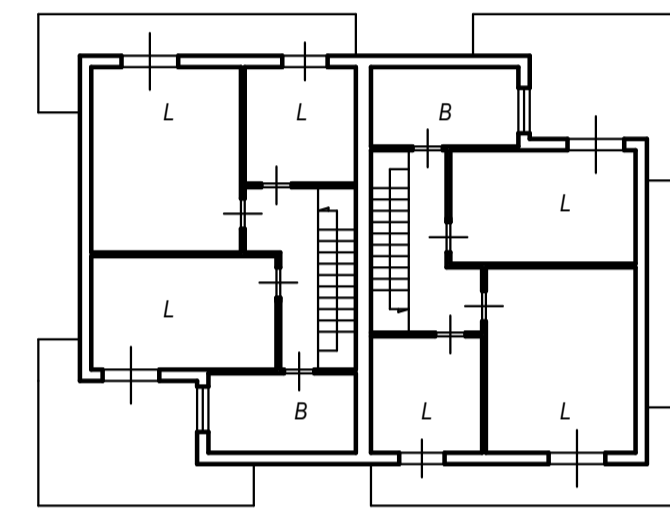
PIANTA PIANO TERRA



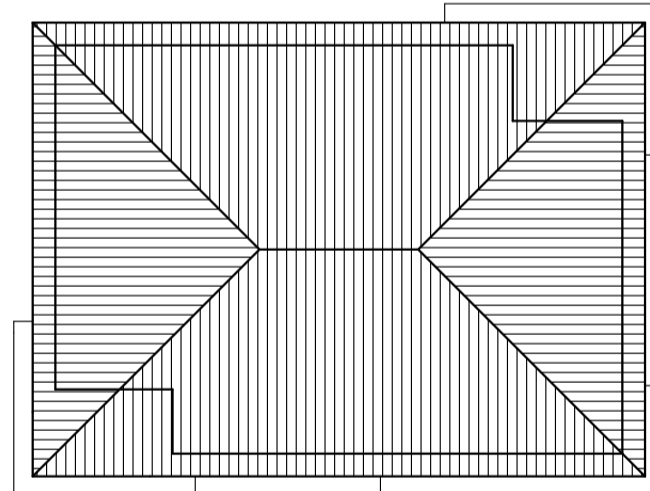
PIANTA PIANO PRIMO



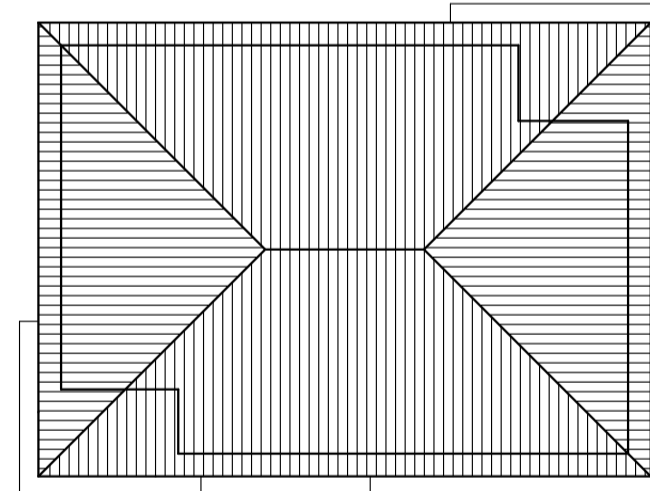
PIANTA PIANO PRIMO



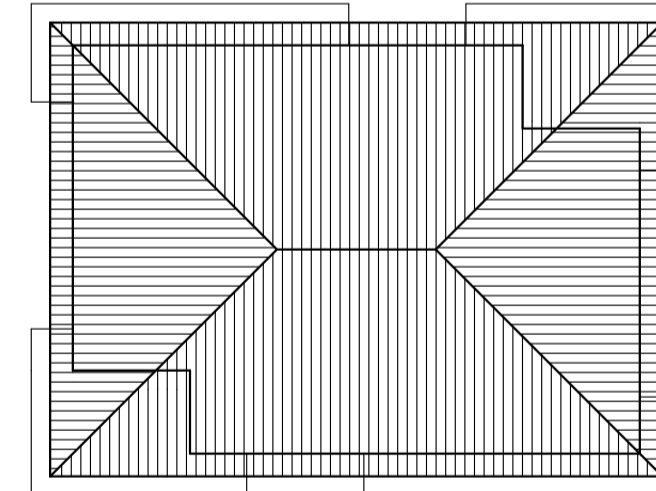
PIANTA PIANO PRIMO



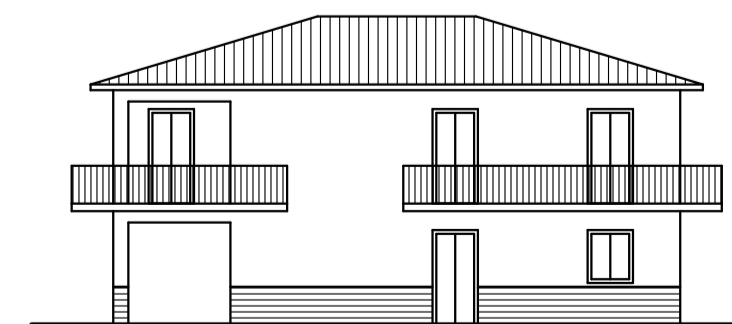
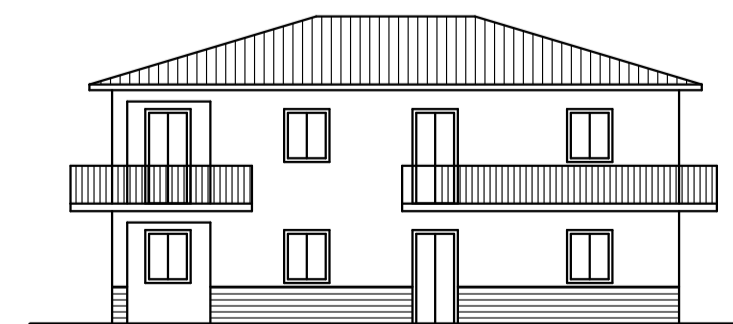
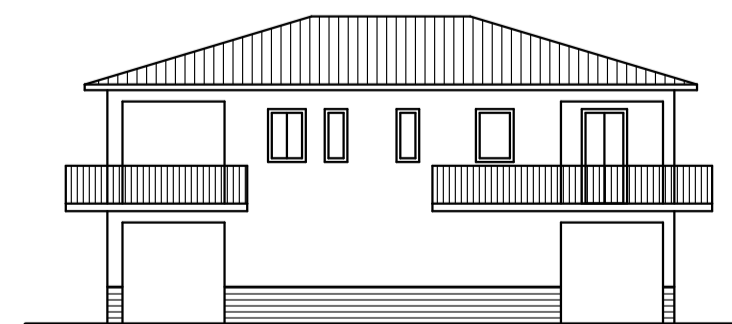
PIANTA COPERTURA



PIANTA COPERTURA



PIANTA COPERTURA




COMUNE DI PRIOLO GARGALLO
(Prov. di Siracusa)

REVISIONE GENERALE DEL
PIANO PARTICOLAREGGIATO DELLA ZONA CP/2 (EX CP/6)



Elaborazione ed aggiornamento cartografico eseguito dall'U.T.C. (Arch. V. Miconi, Geom. D. Bucca, Geom. B. Indriolo, Geom. G. Rametta, Geom. P. Scalogna)

I tecnici comunali progettisti:

Dott. Arch. Vincenzo Miconi

Dott. Ing. Salvatore Ullo

Visto: Il Sindaco

Elaborazione:
Gennaio 2012

Schemi tipologie edilizie

Tav.
P3
 Scala 1:100